



WELCOME TO KINGS ONLINE PLANT DOCTOR

SPIDER MITES

Members of the Acari (mite) family Tetranychidae. Like spiders, mites are Arachnids and not insects.

Spider mites are less than 1mm in size and come in a variety of different colours. Mites suck on the leaves and flowers, causing a pale yellow mottled appearance and are often surrounded by fine silk webbing, which protects them from predator's.

Mites prefer hot and dry environments to start their life cycle. The time frame from egg to adult stage can happen within a week, this rapid life cycle means that Mites can develop resistance to pesticides and Miticides quickly. Alternating sprays will prevent them from developing a resistance to any one spray.

One female can lay around 20 eggs a day, and they can take as little as 3 days to hatch. Which means colonies can grow very rapidly so early intervention is crucial.

PREVENTION

For Indoor Plants:

Mites prefer hot and dry conditions, so are very common on indoor plants. Mist plants daily with water (don't forget the underside of the leaves as this is where Mites are often found).

In addition to misting with water daily, as a preventative measure spray once a week with Grosure [Houseplant Insect Control Spray](#) this will help in preventing Mite infestations getting out of control.

For Outdoor Plants:

Mites are usually more likely to be a problem in sheltered dry areas with little wind flow.

Mulch under plants with [Living Earth More Than Mulch](#) and keep plants watered so that the soil does not dry out.

NATURAL TREATMENT

Indoor Plants: Spray for prevention rather than cure with [Bugtrol](#).

For Palms and other sensitive plants: Spray with [Yates Natures Way Pyrethrum](#).

Mist plant daily above and below the leaves to increase air moisture.

Outdoor Plants: Spray with [Bioneem](#) at 10-14 days intervals or if infestations are heavy spray 3 times 7 days apart.

OTHER TREATMENT

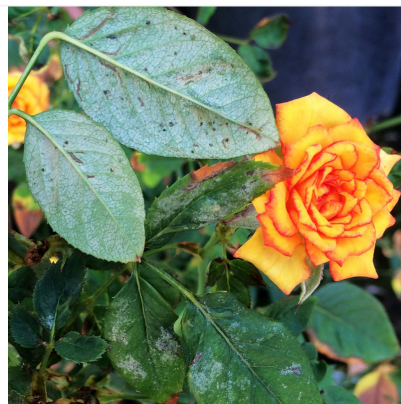
Spray with [Groventive Garden](#) mixed with [Bioneem](#).

For edible crops spray with [Yates Natures Way Organic Citrus, Veggie & Ornamental Spray](#).

Note: [Groventive Garden](#) should NOT be used on edible crops

Note: If spraying palms leave out the [Bioneem](#) as this is an oil based product which palms do not like.

When using sprays and chemicals always read the label and follow instructions carefully. Spray in the evening to avoid harming beneficial insects.



SPIDER MITES

PRODUCT RECOMMENDATIONS

Shop the Kings online store for all your gardening needs



GROVENTIVE GARDEN

A two-way systemic insecticide, safe for bees and most beneficial insects, providing control of sucking insects including harder to control species. Approved for use on roses, pot plants, hedging, flowers and ornamentals.



AQUATICUS BUGTROL CONCENTRATE

An effective, organic, broad spectrum insecticide that can be used to control a broad range of insects. Perfect for use on veggie plants, fruit trees and ornamental plants.



Everything you need!

FOR MORE ADVICE
CONTACT US

0800 PLANTS
09 410 9726

www.plantdoctor.co.nz
plantdoctor@kings.co.nz